

Be Exceptional!

THE EXCEPTIONAL FOUNDATION OF ATLANTA



THE
**EXCEPTIONAL
FOUNDATION**
OF ATLANTA

A SPECIAL PLACE FOR THOSE WITH SPECIAL NEEDS

EFATL OPENS FOR A THIRD GREAT YEAR!

Participants and staff alike are thrilled to be back together for a third great year! We wanted to take a moment to introduce or reintroduce our staff.

Program Director and Co-Founder: Susan Keeney

Program Assistants: Asia Morgan, Gladys Funches, Tracy Cavaness

Executive Director: Beth Malanoski



What we wish we could look like everyday.



What we actually look like everyday.

MINDFULNESS WITH CLAY

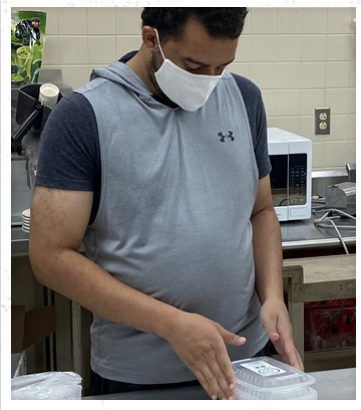
Hsini Des is an artist in New York City. She joined us via Zoom to lead a mindfulness activity using clay. Our members loved it - we could definitely tell that it made us all feel calmer and more centered. It was fun to see everyone's creations at the end! Some of our Connect members joined remotely as well.

Hsini Des guided members to get comfortable, focus on the sounds around them, and begin working with their clay. For about 30 minutes she led them through forming a series of shapes and then invited them to create any kind of sculpture they wished. We photographed our finished sculptures and sent the photos to Hsini Des to be displayed in the "Our Present Time" exhibit at the Artshack Gallery in New York City!



LETTUM EAT!

EFAtI is partnering with Lettum Eat to deliver delicious meals to home bound elderly from Calvin Cove Adult Respite Care. Calvin Cove is unable to meet in person during this time of isolation and so Lettum Eat and EFAtI are making sure that they still get a special delivery every couple of weeks - served up with a bright smile! Members deliver every other Thursday. Chef Hank at Lettum Eat was so impressed by our young adults that he asked that we come to his kitchen weekly to put stickers on the lids of all the meal containers.



MEMBERS PARTICIPATED IN A ZOOM CALL WITH GWINNETT PUBLIC LIBRARY LIBRARIANS

They learned about internet safety topics such as: stop/think/ask, what makes a good password, social media, protecting personal info, safe site clues, what's an ad, fake news, and ask a librarian. We look forward to more great programming from GCPL!



BOARD OF DIRECTORS

Two of our original Exceptional Foundation of Atlanta board members have rotated off the board and we want to take a moment to say THANK YOU to Dr. Barbara Martin and Dr. Anna Mary Smith. These members were instrumental in getting EFAtl off the ground in the very beginning and we definitely wouldn't be where we are without them. We are grateful that they will continue to advise us from a seat on the Advisory Council.

EFAtl welcomed four new Board members in August: Craig Camuso - Regional Vice President at CSX, Chris Carter - Founding Partner at Vantage Realty Partners, John Dickson - Principal at Henssler Financial, and Lauren Marks - Transition Coach for Gwinnett County Public Schools. The addition of these four individuals will not only enhance our fundraising and awareness raising efforts, but their personal knowledge about nonprofits and the special needs community will help to make our organization stronger and position us well for future growth. We are thankful that they have made time in their busy lives to join our Board.



DR. BARBARA MARTIN



DR. ANNA MARY SMITH



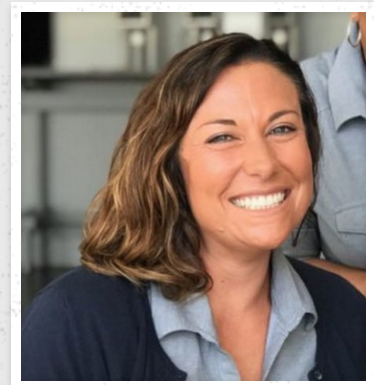
CHRIS CARTER



CRAIG CAMUSO



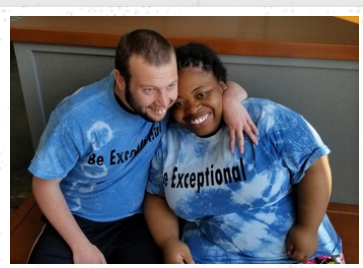
JOHN DICKSON



LAUREN MARKS

WE NOW HAVE PAYPAL TO MAKE DONATING EASIER!

https://www.paypal.com/cgi-bin/webscr?cmd=_s-



THE EXCEPTIONAL FOUNDATION OF ATLANTA

Facebook

A day program for adults with intellectual disabilities that provides purposeful activities to increase social interactions, community involvement and healthier lifestyles.

PO Box 202 Lawrenceville, GA...

info@efatl.org

770-504-6053

efatl.org



THE
**EXCEPTIONAL
FOUNDATION**
OF ATLANTA

A SPECIAL PLACE FOR THOSE WITH SPECIAL NEEDS

September 2020